



New Wave
GROUP

Sustainability
Report
2019

New Wave Group

contents

01 - Introduction 3

Highlights 2019	3
CEO statement	4
Business context	6
Sustainability goals	10

02 - Towards a sustainable profitability 12

Social responsibility in a global supply chain	14
Sustainable and eco-friendly options	18
Quality and product compicance	20
Partnerships	21
Transportation for a sustainable climate	22
The good example	24

03 - About the Group 28

Vision and values	29
Organization and governance	30
Value chain	32

04 - About the report 34

Materiality analysis	34
Stakeholders	35

05 - GRI index 36

The auditor's report	42
Contact	43



Highlights 2019

“New Wave Group was one of eight companies that got full marks when Dagens Industri, the largest business newspaper in the Nordic countries, ranked how over 170 listed companies relate to Agenda 2030 and the UN Global Goals for Sustainable Development.”

New Wave Group was one of eight companies that got full marks when Dagens Industri, the largest business newspaper in the Nordic countries, ranked how over 170 listed companies relate to Agenda 2030 and the UN Global Goals for Sustainable Development.

Significant increase in the share of factories in risk countries that have been audited by third party.

Increased amount of products with sustainability attributes.

Many of the subsidiaries worked actively to develop **new collections of products with sustainability attributes** (several will be launched in 2020).

Continued good development for the eco-labeled brand Cottover.

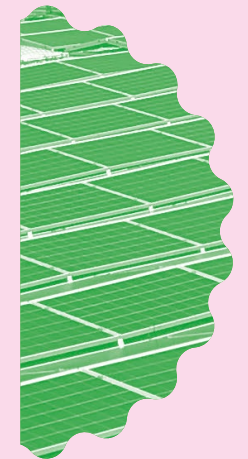
Updated Restricted Substance List for chemicals in products and production (April 2019).



The trend is a continued decrease of emissions from transport.



New Wave Switzerland, one of our largest offices and warehouses, invested in **solar panels.**



CEO statement

“I’m very proud of what New Wave Group has achieved so far in the sustainability area. We constantly strive to work for sustainable development that maximizes our contribution to globally agreed goals for sustainability, creates long-term value for the company and at the same time takes stakeholders’ expectations into account.”



more sustainable habits. Our customers share our responsibility and must be a part of the solution. In fact, customers vote with their wallet on which products and companies will be successful in the market. Fortunately, customers increasingly want products with responsibility built in, something that the positive development of our brand Cottover testifies. But I think we can be even better at helping customers to make conscious choices by improving our communication and spreading the knowledge about the major sustainability challenges in our industry, and what New Wave Group is doing to address them.

The next step for us forward is an increased focus on circularity and the development of products that, for example, enable reuse of the material and where as little as possible goes to waste when the product is worn out.

Again, it is also about working with the customers and spreading the knowledge so that the products are used and handled properly.

I look forward to, together with our customers, employees and suppliers, continuing the often long and complex journey, but where each achievement is a starting point to take on even bigger challenges. One step at a time, a little better every day.

Torsten Jansson
Torsten Jansson
CEO

But the more you work to leave a positive impact, the more insights you get about everything that needs to be done.

At New Wave Group, we have never considered ourselves perfect and have always been humble regarding our shortcomings and the challenges we face. The industries in which we operate, like many others, are often criticized from a sustainability point of view and sometimes it can seem hopeless from an outside perspective. But I can assure you that it is not. I have also seen the strength of working together, both within the New Wave Group and in different partnerships, for positive impact and true change. Sometimes you have to stop for a while and remind yourself of everything you have done and what you have actually achieved. A pat on the shoulder is always encouraging and gives you motivation to continue the work.

This becomes especially clear when you receive an award of some kind. Like when we got full score when Dagens Industri, the largest business newspaper in the Nordic countries, ranked how over 170 listed companies relate to Agenda 2030 and the UN Global Goals for Sustainable Development. New Wave Group was one of eight companies that got full marks – six points out of six possible!

We have a responsibility as a Group to not only drive change, but also work together with our customers for

Trademarks in focus

Corporate



Sports & Leisure



Gifts & Home Furnishings



Business context

How New Wave Group works with sustainability and what areas we focus on are interrelated with our business context and the questions that are highly valued by our stakeholders. Below, we address areas that characterize our work, all directly or indirectly linked to the global goals for sustainable development.



together to build a better future for everyone. In Sweden, the government's ambition is to become world-leading in sustainable fashion production and consumption.

For New Wave Group, all 17 sustainability goals are important and we try to influence them in a positive direction, either directly or indirectly. The goals are strongly interconnected, but we consider our business can make more significant contributions to four of them. The illustration to the right shows examples of how we can contribute to the different goals.

In Sweden, the government's ambition is to become world-leading in sustainable fashion production and consumption, which requires commitment from business, civil society and the general public.

GLOBAL GOALS FOR SUSTAINABLE DEVELOPMENT

In 2015, world leaders agreed to 17 goals for a better world by 2030. These goals have the power to end poverty, fight inequality, stop climate change and encourage peace and justice. With its 17 goals and 169 targets, this is the most ambitious agreement for sustainable development the world leaders have ever adopted. The Global Goals unite the countries in the world through a universal agenda and demand that all countries – rich and poor – act both nationally and globally to achieve the goals by 2030. Guided by the goals, it is now up to all of us, governments, businesses, civil society and the general public to work



We consider our business can make more significant contributions to four of the Global Goals:

Example of how New Wave Group contributes to the Global Goals towards sustainable development:



08 - DECENT WORK AND ECONOMIC GROWTH

Ensure good working conditions, both within the Group and in the global supply chain (page 14).



12 - RESPONSIBLE PRODUCTION AND CONSUMPTION

Develop as sustainable products as possible (page 18) and actively spread knowledge and information about sustainable consumption.



13 - CLIMATE ACTION

Choose transportation with eco-friendly fuels and improved vessels (page 22).



17 - PARTNERSHIPS FOR THE GOALS

Partnerships such as amfori BSCI, FLA, Accord on Fire and Building Safety in Bangladesh, Clean Shipping Index and Mistra Future Fashion.

SUSTAINABILITY FROM A LIFE CYCLE PERSPECTIVE

With an increasing world population and a growing middle class, in combination with unsustainable human consumption patterns, we consume more of the nature's resources than the planet is capable of. In order to meet the challenges we must use resources more responsibly and move towards a circular economy. This is not just about recycling and reuse but also efficient use of resources throughout the entire life cycle of a product. Increasing the longevity of the products by prioritizing quality and optimizing the length of use is the most important thing we can do in order to cope with the environmental strain caused by a linear industry. For example, did you know that if an average garment could stay in use three times longer than today, its carbon footprint can be reduced by 65 % and the water use by 66 %?*

QUESTION!

What do you think one should consider for a more sustainable consumption?

- ✓ Invest in high-quality products (to enable long life-span). See the value of the product and the work behind it.
- ✓ Follow care instructions.
- ✓ Consider which transportation to use when purchasing the product.
- ✓ Ask producers for more information about their sustainability work. Support brands you think are doing a good job.
- ✓ Enable further use of the product by providing it to resellers/second hand.

- Anni Sandgren, CSR and Sustainability Manager, New Wave Group

SUSTAINABLE CONSUMPTION

It is unlikely that anyone wants to destroy the climate and contribute to bad working conditions in developing countries. Yet, this is the negative side of today's consumption. In almost every purchase decision, the customer is forced to choose between the value of the product and their own values. It does not have to be that way. Today, reports from around the world show that there are billions of people looking for more conscious offerings. Broadly speaking, one in four customers is actively looking for offerings that contribute to a more sustainable development. Consumer two and three are not looking for themselves, but also want to be able to shop more ethically and responsibly. Only consumer number four is uninterested, but still happy if the product subsequently turns out to have added values in terms of sustainability. With trends such as an increasingly

conscious middle class, higher expectations on corporate responsibility and improved knowledge about the effects of consumption on people and planet, this suggests that the market for sustainable products will grow more.

At New Wave Group, we focus on creating eco-friendly offers, for example through the brand Cottover. We want to help our customers to make conscious purchases as we are convinced that the customers' purchasing decisions and consumption are crucial to being able to drive sustainable development in the long term. The customer votes with his or her wallet on the products and companies they want to support and thus become successful in the market.

CLIMATE CHANGES

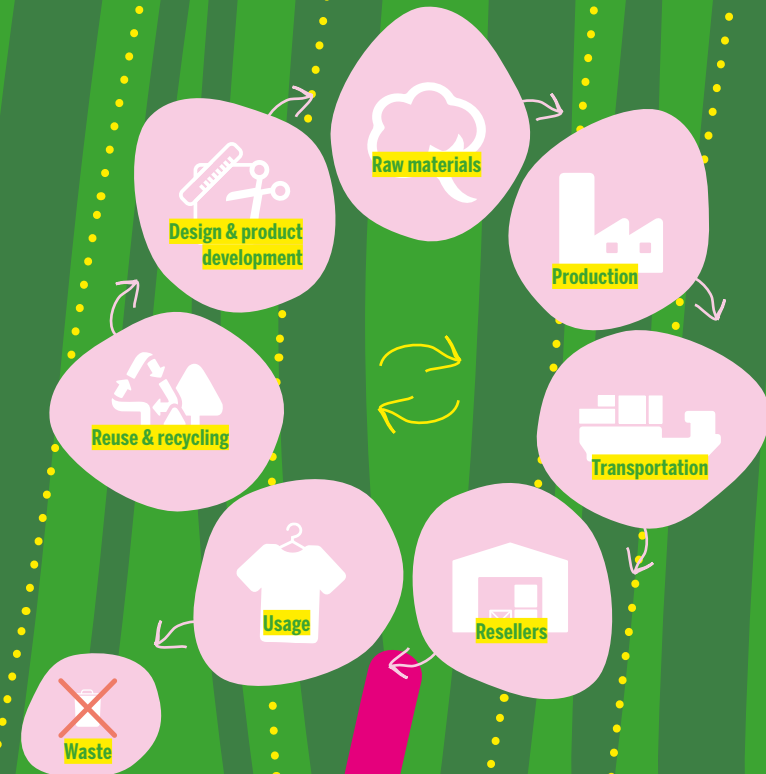
Two degrees Celsius. That is the planet boundary for global warming. The temperature is rising faster than predicted and it is due to our emission of greenhouse gases. Global warming has catastrophic consequences, such as global meltdown of glaciers, elevated sea levels, more floods, storms and forest fires, and extreme temperatures are becoming increasingly common. The poorest and most vulnerable people on our planet are suffering hard, partly because of threatened food production. In addition, important species, habitats and entire ecosystems are threatened.

Combustion of fossil fuels accounts for the biggest contribution to global warming. Thus, the transportation sector plays a vital part in the fight for our climate. For New Wave Group, transportation and logistics is a key question and we are determined to take our responsibility and take actions to reduce our climate impact.

65%

Did you know that if an average garment could stay in use three times longer than today, its carbon footprint would be reduced by 65 % and the water use by 66 %?*

* Source: Mistra Future Fashion



Sustainability goals

New Wave Group's corporate sustainability efforts and sustainability goals revolve around the areas where we can make the biggest difference. Below we present the goals a little closer. The goals serve as a guide and reminder of what the Group and its subsidiaries should prioritize.

are not always available. This applies in particular for the hardline products where the selection of eco-labels and certifications is very limited. Therefore, when measuring the amount of sustainable products we use our own indicator "products with sustainability attributes".

We base our classification of the products on established industry practices. The development is moving forward and the list of materials and processes we view as more sustainable will be updated and adjusted over the years.

Textile products with sustainability attributes include products with one or more of the following labels, materials or processes: The Nordic Ecolabel, GOTS, Oeko-Tex, Fairtrade, recycled polyester, spun dyed polyester, EXP 4.0 treated wool recycled polyamid. Oeko-Tex is by far the most represented attribute and accounts for more than 90 % of the products with sustainable attribute.

Hardline products with sustainability attributes include products with one or more of the following labels and materials: FSC, recycled polyester, recycled rubber, biobased plastics and recycled glass. Also included are crystal products from Orrefors Kosta Boda made of so-called "eco-crystal" that are free from lead and arsenic, which is unfortunately still common in the industry.

In 2019, we see a relatively modest increase in products with sustainability attributes, despite a lot of work going on in the Group. Several of the subsidiaries worked during the year to develop new collections of products with sustainability attributes, which will be launched in 2020. Thus, we can expect to see greater effect in the 2020 report.

PRODUCTS WITH SUSTAINABILITY ATTRIBUTES

New Wave Group aims to introduce more sustainable and eco-friendly materials in our range of products. We want to increase the amount of products coming from sources and processes with extra care for people and the planet (read more on page 18). Working with eco-labels and certifications is an important part of our sustainability work. It is a tool to help our customers to identify the best performing products in terms of social and environmental responsibility.

Measuring the amount of certified products would have been a clear way of reporting the amount of sustainable products. However, we think it is important to also highlight products which for example are made of more environmentally friendly materials where certifications

		2017	2018	2019	Goal	Comments
Products with sustainability attributes	Textile products*	835	964	1036	90% year 2025	Number of active products
	Hardline products*	384	397	461	50% year 2025	

* New Wave Group has around 8,000 active products (color/size excluded). Around 50% are textile products and 50% are hardline products.



THIRD-PARTY AUDITED FACTORIES IN RISK COUNTRIES

We are aware of the responsibility that comes with sourcing goods in countries with different legal standards and labor conditions. New Wave Group strives to continuously improve working conditions in the global supply chain (read more on page 14). An important tool is third-party audits to follow up the implementations of our Code of Conduct.

For the purchasing offices, we began measuring the amount of third-party audits in 2013 when New Wave Group became members of the amfori BSCI. At that time, 52 % of the purchases were made through

factories that had undergone third-party audits. In 2019, the corresponding figure shows as much as 96 %.

In 2017, we broadened the scope and included purchases both through the purchasing offices and also the subsidiaries' own sourcing (not made through the purchasing offices). For 2020, the following goals were set for third-party audits of factories in risk countries: 90 % of total number, 95 % of purchasing volume and 100 % of purchasing volume through purchasing offices.

We can conclude that we have stepped forward, but did not reach all the way. The challenge lies primarily in the

purchases made outside the purchasing offices, when the orders are often smaller and non-recurring.

We constantly strive toward having all factories in risk countries undergo valid third-party audits with good grades. Therefore, we choose to rephrase the goal to that 100 % of our factories - whether measured by the number of factories or purchasing volume - should have a valid third-party audit in 2025.

		2016	2017	2018	2019	Goal	Comments
Third-party factories audited in risk countries	% of total number of factories in risk countries	-	59%	67%	77%	100% year 2025	Risk countries according to amfori BSCI's definition
	% of purchasing volume from factories in risk countries	-	86%	85%	90%		
	% of purchasing volume from purchasing offices	80%	92%	92%	96%		



02 - Towards a sustainable profitability

New Wave Group believes in sustainable growth. It is important for us to adapt business solutions that are financially profitable, but also sustainable from a social and environmental perspective. The objective is to minimize any negative impact and at the same time maximize the positive effects. We work for sustainable development that maximizes our contribution to globally agreed sustainability goals, creates long-term value for the company and at the same time takes stakeholders' expectations into account.

In this section, we will describe more about how we work with focus on the areas where we believe that our operations can make a significant difference. This includes everything from how we work with social responsibility in the global supply chain and how we think about materials and eco-labels – to product responsibility, quality, transport and the importance of partnerships in different contexts.

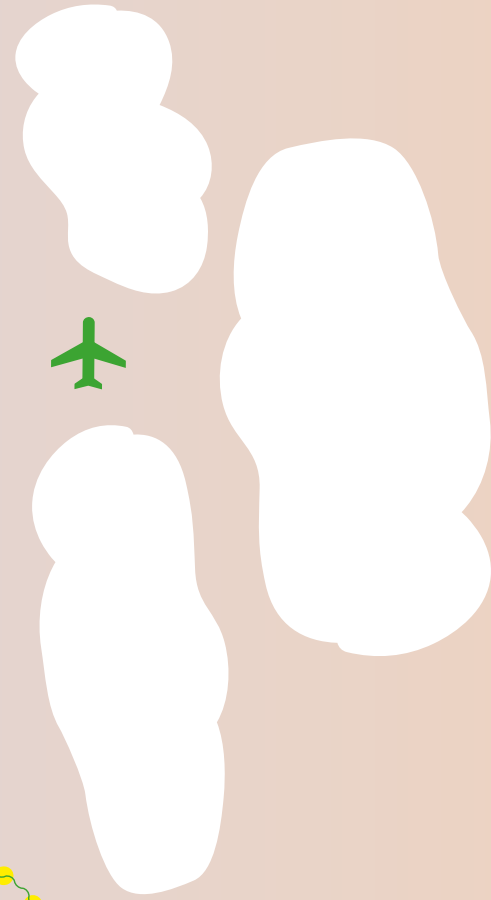
For us, it is not just about reporting what we do, but it is also about spreading knowledge and raising awareness about sustainable consumption and sustainability aspects in the production of textiles and other goods.

In this way, the Group can contribute to Global Goals for Sustainable Development while ensuring a good dialogue with customers and other stakeholders.

QUESTION!
What will the development of companies' sustainability work look like in a few years?

I think we will see continued increased demand on companies to take responsibility for a sustainable society and that products are produced in a more responsible way. Transparency throughout the whole supply chain and more information about origin, quality and content are key factors in having customers' trust in the future.

- Anni Sandgren,
CSR and Sustainability
Manager, New Wave Group



Flip!

EMISSIONS FROM TRANSPORTATION
New Wave Group shall participate in fighting for reduced climate impact and seize every opportunity to reduce greenhouse gas emissions from our business operations. Priority areas are primarily where we have direct impact by transportation and logistics (read more on page 22). Since air freight has the highest emissions of greenhouse gases, we have a zero vision for this transportation.

For 2019, we also report weight data for long-distance transport between Asia and North America. However, emissions data are not reported as the subsidiaries use different carriers, which implies that detailed accounting methods differ between the subsidiaries' reporting and is thus not comparable.



CO2e (t)	Mode	2016	2017	2018	2019	Goal	Comments
		2501*	7852	3804	2672		
Freight (t)	Air	1767	1790	1236	1154		
Asia - Europe	Sea	218	234	154	183		
Freight (t)	Air	4460*	11484	11457	10357		
Asia - Europe	Sea	-	-	-	86		
Freight (t)	Air	-	-	-	4574		
Asia - North America	Sea	-	-	-	-		

* During 2016, New Wave Group signed a new agreement for shipments between Asia and Europe. Reported data refers to the period August-December 2016.

Social responsibility in a global supply chain

New Wave Group shall work to ensure that we, our suppliers and partners respect human rights and international conventions for good labor conditions. This means actively setting requirements and supporting suppliers as well as ensuring that resources are deployed where they are needed to comply with the New Wave Group Code of Conduct. Here we will tell you more about our work to improve working conditions in the global supply chain.

OUR PRODUCTION COUNTRIES

Most of our products are produced by external suppliers, mainly located in Asia. We are aware of the responsibility that comes with sourcing goods in countries which have not come as far as Sweden when it comes to working conditions and environmental issues. Many challenges in developing countries can be related to poverty and lack of welfare systems. We always aim to have an open dialogue with our suppliers to discover potential issues in time. Having good suppliers is key for our business and we depend on their business operations as much as they depend

on ours. Hence, we care about the situation on the factory floor and that the suppliers are treating their workers with respect and according to law.

In 2019, New Wave Group had production in 33 countries. The majority of the factories are located in China. 91 % are located in risk countries according to amfori BSCI's definition: Bangladesh, Bulgaria, China, Ethiopia, The Philippines, Honduras, India, Indonesia, Macedonia, Myanmar, Pakistan, Romania, Taiwan, Thailand, Turkey and Vietnam.

DISTRIBUTION PER PURCHASE OFFICE

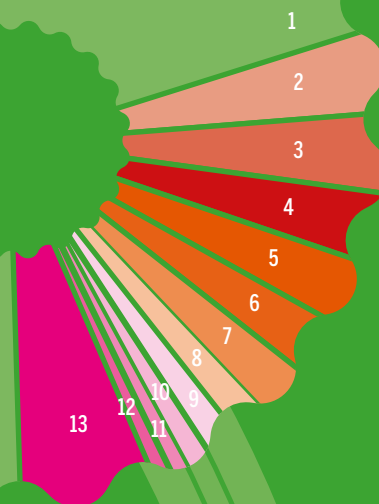
Based on purchasing volume, previous year in parentheses.

LOCAL PRESENCE

Our own four purchasing offices in China, India, Vietnam and Bangladesh are an important part of our social and environmental responsibility in the supply chain. **Local presence makes it easier to visit, support and train our suppliers in sustainability questions.** The biggest strength of New Wave Group is that we have our own CSR staff on site working full time with these tasks. Based on purchasing volume, approximately 80 % of the Group's purchases in risk countries are made through the buying offices.

NEW WAVE GROUP'S PRODUCTION COUNTRIES

Based on number of factories. Previous year in parentheses.



PRODUCTION COUNTRIES

1. China 71% (72%)
2. Bangladesh 4% (3%)
3. Vietnam 3% (3%)
4. India 3% (3%)
5. Pakistan 3% (2%)
6. Turkey 3% (2%)
7. Portugal 2% (2%)
8. Myanmar 1% (1%)
9. Poland 1% (1%)
10. Taiwan 1% (2%)
11. Germany 1% (0%)
12. The Netherlands 1% (0%)
13. Other 6% (6%)

PURCHASING OFFICES

1. China 65% (67%)
2. Bangladesh 19% (19%)
3. Vietnam 11% (11%)
4. India 5% (3%)

30

QUESTION!
What are the advantages of being a member of amfori BSCI?

The membership comes with many advantages. The harmonization helps us to create transparency and precision in our supplier requirements. At the same time, we minimize costs and administration related to

the monitoring process for both members and suppliers. Through amfori BSCI we can request an audit and share the reports with other members. Co-operating with other brands further improves our ability to implement changes, as we will

have a stronger voice together. More and more companies are realizing that common challenges are best handled with joint forces.

Anni Sandgren,
CSR and Sustainability Manager, New Wave Group

Together the members of amfori BSCI reach out to approximately 30 000 unique suppliers worldwide.

CODE OF CONDUCT

New Wave Group's Code of Conduct is a policy which contains requirements such as minimum wage, working hours, prohibition of child labor and several other requirements from the ILO Conventions and the UN Declaration of Human Rights.

The Code of Conduct summarizes what we expect from our suppliers when it comes to social and environmental responsibility. We have adopted the Code of Conduct of amfori BSCI (Business Social Compliance Initiative). Companies all over the world are working together, using the same Code of Conduct, meaning

that more than 2 000 companies have adopted the code. Together we reach out to approximately 30 000 unique suppliers worldwide.

As a member of amfori BSCI, New Wave Group is obliged to implement and follow up the Code of Conduct through third-party audits of our suppliers.

amfori BSCI

amfori BSCI is a global initiative for companies all over the world committed to improve working conditions in the supply chain.





THIRD-PARTY AUDITS

In addition to internal audits, the monitoring of the Code of Conduct is made through third-party audits. An amfori BSCI audit is performed by professional auditors, accredited by SAAS (Social Accountability Accreditation Services). Our goal is to include all our suppliers located in risk countries in amfori BSCI or an equal monitoring system and that the audit should result in a good grade.

An amfori BSCI-audit results in an overall grade between A-F to summarize the supplier's performance. The audit takes into account the actual working conditions as well as management systems and policies established to ensure a systematic work. In total, 13 different areas are assessed, corresponding to the requirements in the Code of Conduct. The most common grade is C, which can be translated into "Acceptable". There are usually some non-compliances that must be handled, but the labor conditions do not violate the Code of Conduct or pose an immediate threat to workers' health and safety. Common non-compliances could be excessive overtime work or lack of documentation. To address such issues requires dedication and the ability of production planning. It is important to have a long-term perspective and work for continuous improvements.

OWN PRODUCTION UNITS

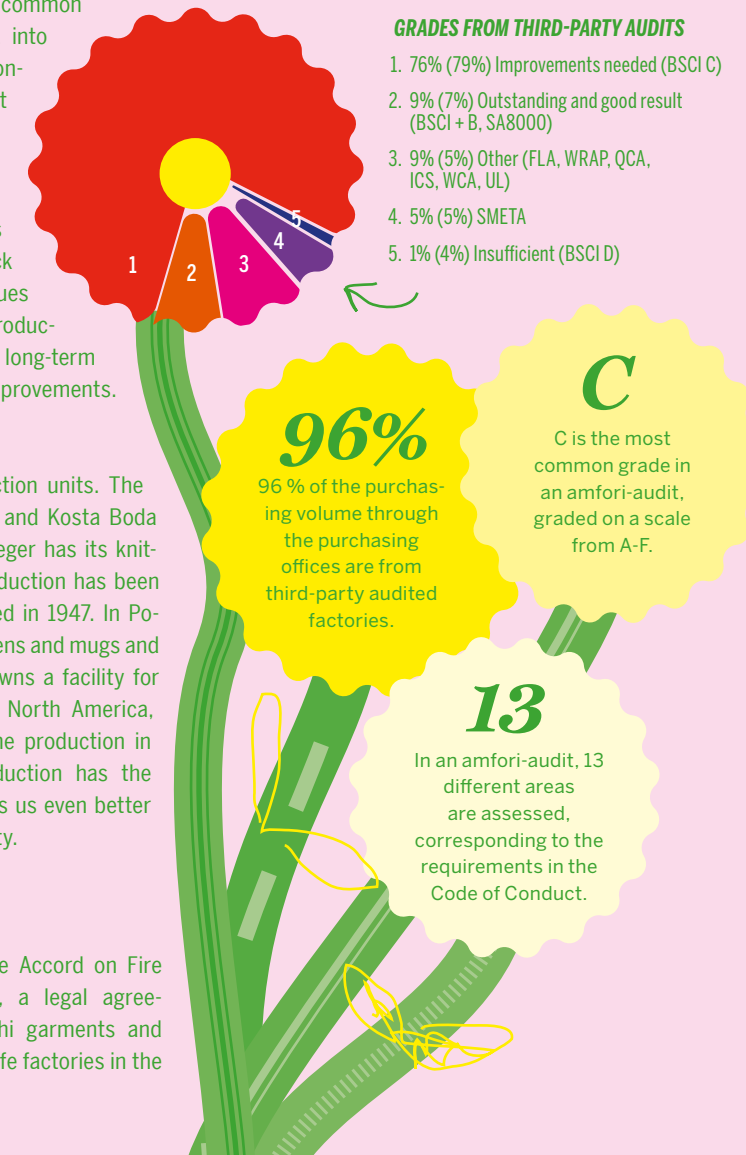
New Wave Group owns a few production units. The glasswork in Kosta supplies Orrefors and Kosta Boda with premium utility and art glass. Seger has its knitting factory in Røshult where the production has been based since the company was founded in 1947. In Poland, Toppoint has a printing unit for pens and mugs and in Denmark our subsidiary Dahetra owns a facility for embroidery and transfer printing. In North America, AHEAD and Cutter & Buck have some production in terms of embroidery. In-house production has the benefit of direct influence, which gives us even better opportunities to work with sustainability.

ACCORD ON FIRE AND BUILDING SAFETY IN BANGLADESH

In 2014, New Wave Group signed the Accord on Fire and Building Safety in Bangladesh, a legal agreement between buyers of Bangladeshi garments and factory owners to work together for safe factories in the

country with a focus on structural, electrical and fire safety. The Accord has brought important changes that would not otherwise have been possible in such a short period of time, but still a lot of work remains. Therefore, a new agreement has been developed that entered into force in May 2018 when the first accord expired. New Wave Group signed the new agreement in November 2017. The Accord directly affects two million workers, making it one of our most important social responsibility projects.

Read more on www.bangladeshaccord.org



Sustainable and eco-friendly options

New Wave Group aims to introduce more sustainable and eco-friendly alternatives in our range of products. We want to increase the amount of products coming from sustainable sources and processes and help our customers to imbed social and environmental criteria in their purchasing decisions. Here are some examples of products developed with care of people and the planet in mind.

COTTOVER

In spring 2015, we launched the brand Cottover – a complete eco-labeled garment collection certified by Nordic Swan Ecolabel, GOTS, Fairtrade and Oeko-Tex. The cotton is organic, which means it is grown without chemical pesticides and fertilizers, and Fairtrade-certified which ensures fair economic and social conditions for the cotton farmers. The polyester is recycled from old PET-bottles and we have applied social and environmental criteria throughout the whole supply chain – from raw material to finished garment. The garments have also been independently quality tested in order to pass the requirements of Nordic Swan Ecolabel. We are proud to be able to offer a complete assortment of sustainable clothing, cooperating with four different third-party certifications - Nordic Swan Ecolabel, GOTS, Fairtrade and Oeko-Tex. The certifications have all put their mark, their independent guarantee, on our garments.

QUESTION!
Why should you buy third-party certified products?

As a customer, it is difficult to know what you are actually buying and how a product has been manufactured. A third-party certification provides credible guidance for both the producer and the customer that a product meets specific requirements. It helps the customer to make a more sustainable choice and support suppliers who invest in environmentally friendly practices and better working conditions.

- **Anni Sandgren**, CSR and Sustainability Manager, New Wave Group

NORDIC SWAN ECOLABEL

Takes the products' environmental impact throughout the whole life cycle into account. Strict chemical and quality requirements.



GOTS

GOTS-certified textiles are always made of organic cotton and if applicable, recycled polyester. Guarantees full traceability and puts social requirements on all actors in the supply chain.



FAIRTRADE

When you buy Fairtrade cotton, producers who grow the cotton are given the opportunity to improve their finances and their working conditions.



OEKO-TEX

Guarantees that the finished product does not contain any harmful and hazardous chemicals.



SPUN DYED POLYESTER

The biggest environmental impact in the life cycle of clothes and textile derives from the fiber processing and wet treatments. Normally, this requires huge amounts of water,



chemicals and energy. Spun dyed polyester is a way to add color to polyester fabric in a much improved way. Instead of soaking fabric or

yarn in water with dyestuffs, the color pigment is added into the polymer melt. Thus, the color pigments become an imbedded part of the fiber prior to extrusion. Not only does this eliminate the need for a conventional wet dyeing process – saving approximately 60% energy and water – it also results in excellent quality properties such as improved color fastness. Garments made out of spun dyed polyester are available among our brands Clique, Craft, Projob and Printer.

A WIDE ASSORTMENT OF OEKO-TEX

Oeko-Tex is the world's most recognized and independent product label for all types of textiles tested for harmful substances. Garments with the Oeko-Tex-label have been successfully tested for chemicals that pose a health risk, and therefore contribute to an effective consumer protection, taking into consideration both REACH and non-regulated substances. Within our brand Clique, more than 80 % of the assortment is certified by Oeko-Tex.

OUR AMAZING GLASS!

Garments are just one example of materials that can decrease their environmental impact. Another important material is glass. Glass affects the environment in several ways and historically, many substances have been used that are harmful to the environment. Orrefors Kosta Boda has conducted active environmental work for many years and has been world leading in its ambition to create crystal glass without lead and



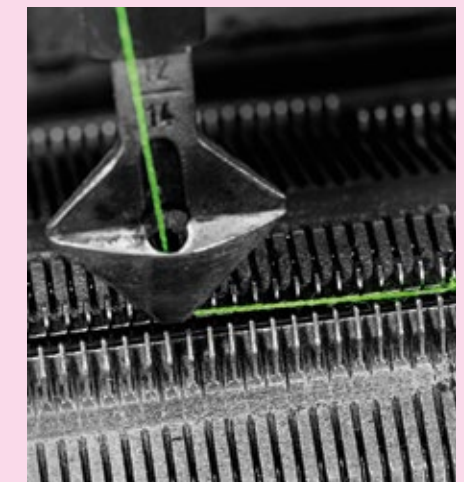
arsenic. This glass is sometimes referred to as "eco-crystal", but in Kosta Glassworks it is simply the material we use for the entire glass manufacture in Kosta.

EXP 4.0 MERINO REWOOLTION

Wool is a fantastic material and more sustainable in itself than most other textile fibers. It is a 100 % biodegradable and renewable fiber, valued for its natural water- and soil repellence. Unfortunately, the processing of wool includes steps with negative environmental impact. The process of one ton of wool treatment requires approximately 0.5 ton of chlorine, several other industrial chemicals and huge amounts of water.

EXP 4.0 is a modern technology of wool that requires fewer chemicals and uses up to 50 % less water than older treatments.

EXP 4.0 is the first wool treatment that meets stringent requirements of eco-labels such as GOTS. Our brand Seger obviously chose to knit its Sense and Everyday socks in EXP 4.0 treated wool.



Quality and product compliance

New Wave Group shall consistently provide products and services that meet or exceed the requirements and expectations of our customers. To ensure the quality of our products, we work closely with our suppliers and perform both quality and chemicals testing.



Chemicals are present in our everyday-environment, but do not automatically imply a hazard.

QUALITY CONTROL AND INSPECTIONS

New Wave Group's procurement strategy is to purchase directly from the suppliers, without intermediaries that reduce our control of the supply chain. Being represented on site with sourcing offices enables us to have a close partnership with our suppliers and to actively monitor the flow of goods and quality. We have employed quality controllers that continuously visit factories to ensure the highest product quality. We have also invested in our own, in-house quality labs where we have equipment for conducting a variety of quality tests, such as for shrinkage, color fastness and pilling.

PROGRESSIVE CHEMICAL WORK

Chemicals are present in our everyday-environment, but do not automatically imply a hazard. In fact, chemicals are needed to live the life we do. However, it is important with adequate knowledge to handle chemicals in a correct and safe manner. New Wave Group invests a lot of time and resources in a progressive approach to chemicals.

New Wave Group is a member of the Swedish Chemicals Group by RISE. We receive the most updated information on legislation and research on chemicals, which supports our active work to reduce and replace chemicals in accordance with the best available techniques. All New Wave Group suppliers must follow the requirements stated in our Restricted Substance List (RSL). The list has been designed

in accordance with legislations such as REACH (European Union chemical legislation) and other industry recommendations and standards. As a result, our requirements sometimes are stricter than the applicable legislation. The RSL is continuously updated and communicated to our suppliers.

We conduct sample testing to ensure that our requirements are being respected and adhered to. Every year, we conduct about 300 different chemical lab tests, including textile products as well as products made out of plastic or ceramic. A lab test is never a guarantee of a product's chemical content, but an important tool for us to get an indication of product compliance and maintaining a systematic approach regarding chemicals. We also benefit from product labels such as the Oeko-Tex label. Follow-up and control of routines also take place in connection with inspections by authorities.

We conduct sample testing to ensure that our requirements are being respected and adhered to.

Partnerships and networks

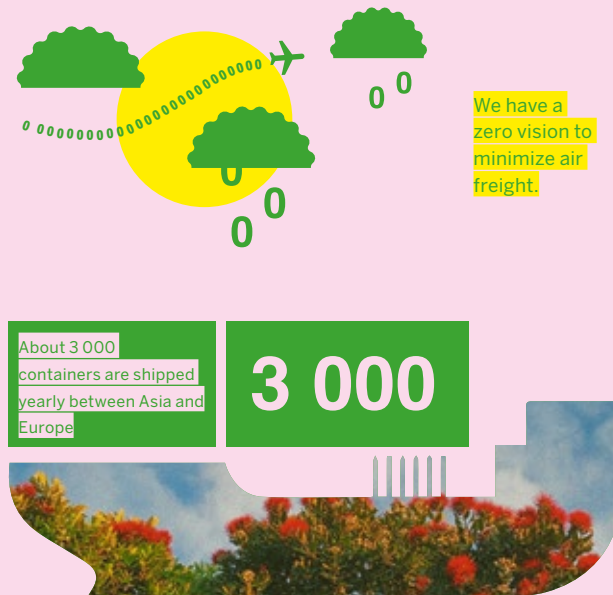
Many issues and challenges require cooperation at a higher level than with individual companies. There are many ways to make a difference together and learn from each other. Therefore, an important mission for our Sustainability-Team is to participate in different industry networks and round table discussions to share information and discuss structural problems and solutions.

For example, we regularly participate in the amfori BSCI National Group and the Swedish Chemicals Group. In addition to the above initiatives, we also participate in the Buyers Forum in Bangladesh (organized by World Bank Group IFC-SEDF), CSR Forum in Shanghai and CCR CSR's (Save the Children's Sustainability Center in China) Virtual Youth Development Working Group.



Transportation for a sustainable climate

The transportation sector plays a vital part in the fight for our climate as fossil fuel accounts for the biggest contribution to the greenhouse gas effect. For New Wave Group, transportation and logistics is a key question. We are determined to seize every opportunity to reduce greenhouse gas emissions from our business operations.



New Wave Group depends on a well-functioning distribution network. Hence, transportation and logistics must be efficient and sustainable to meet our requirements. Most of New Wave Group's transportation consists of ocean container shipments between Asia and Europe, resulting in an average of 3 000 containers per year. For long-distance shipments, air freight and ocean freight are usually the only available transport modes. Air freight results in significantly higher emissions of greenhouse gases. Therefore, we have a zero vision to keep air freights to an absolute minimum, for example only very urgent deliveries that may be crucial for large business agreements.

EFFICIENT ROUTINES

New Wave Group has two main strategies to decrease our environmental impact and to cut our emission of greenhouse gases. First of all, we strive to streamline our own logistics and operations. Within New Wave Group, we club together as much of our shipments and cargo

as possible. Among other things, we implemented a project in 2018 on improved packaging solutions for long-distance transportation. Effective routines reduce the environmental footprint as well as the financial cost for our company. Hence, we consider sustainable distribution as a natural part of our journey towards a more sustainable company.

QUESTION!

How does shipping affect the marine environment?

The exhaust gases from the large ship engines often contain high levels of acidifying and fertilizing sulfur, nitrogen oxides and other dangerous particles. Also, the release of oils and chemicals into water and the leakage of toxic substances from boat watercolor is unfortunately still a reality. Therefore it is important that we try to influence the carriers we work with.

- **Anni Sandgren**, CSR and Sustainability Manager, New Wave Group



IMPROVED ENVIRONMENTAL PERFORMANCE

Our second strategy is to influence the carriers that we are cooperating with. Because the air freight has such a significant climate impact, perhaps the challenges within the shipping have not been given so much attention in many companies' environmental work. But shipping also has its problems, mainly related to emissions, pollution and garbage from the vessels. The biggest impact from an environmental point of view can be achieved by investments in eco-friendly fuels and vessels with improved fuel- and energy efficiency. New Wave Group is therefore a member of Clean Shipping Index (CSI).

Clean Shipping Index was founded in 2007 with the aim to impact the carriers to use cleaner vessels and upgrade their fleet of ships. Through the CSI Database we have direct access to data on emissions and the environmental performance of a high number of ships. In this way, we can help to create market incentives for environmentally improved vessels.

Clean Shipping Index



Clean Shipping Index is an initiative aiming to impact the carriers to use cleaner vessels and upgrade their fleet of ships.

The good example

New Wave Group's sustainability efforts are closely linked to the purchasing offices and the production of products. But within the Group, there is a much more extensive work going on than that. Here are some examples from different subsidiaries.

Fuseknit Comfort Baselayer is made of recycled polyester



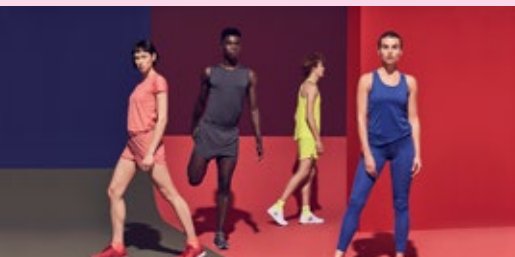
CRAFT

Sustainability plays a central role for Craft when developing functional sports clothing designed to last over time and withstand tough environments and weather conditions. Craft is driven by a sustainable mindset in the entire design process – developing high-quality products that don't need to be replaced as often.

Products are replaced with an organic cotton fabric. In 2019, Craft launched its first fully spun dyed concept: The Essence range in the bike category. Thanks to the opportunity of sharing the raw fabric used with other brands within the Group, Craft have been able to reach sustainable concept that is still highly commercial. Future ambitions and goals are set high and Craft is committed to steadily increase the use of more sustainable materials and processes.

Future ambitions and goals are set high and Craft is committed to steadily increase the use of more sustainable materials and processes.

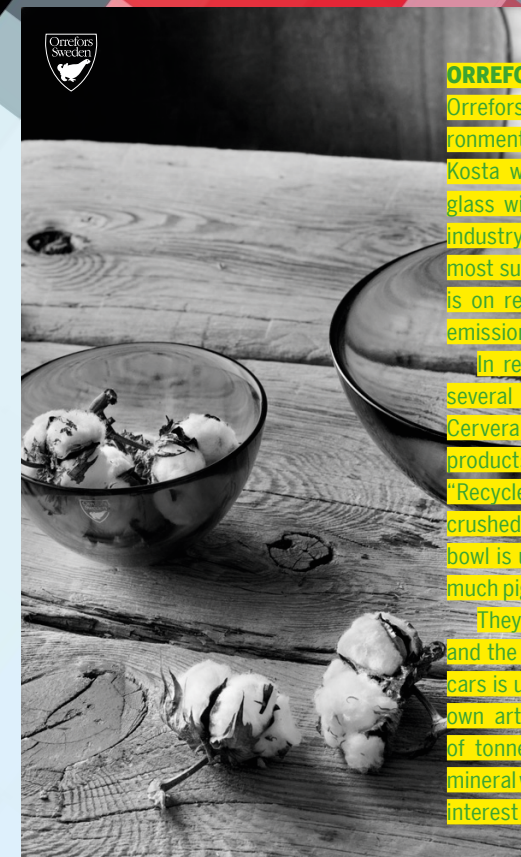
The last seasons Craft has also implemented a number of other initiatives in a product level. For example, Craft's most sold base layer collection, Fuseknit Comfort, is now made of a recycled polyester fabric and all cotton-based



SEGER uses ses Bamlana from bamboo fiber and EXP 4.0 treated merino wool.

SEGER

The Seger factory in Røshult, Sweden, has for a long time invested in a greener production process. The work to recycle and reduce waste is an on-going part of the daily environmental efforts. In terms of sustainable materials, Seger for example uses Bamlana from bamboo fiber and EXP 4.0 treated merino wool. In 2017, Seger completely switched to energy from wind power in the production, coming from wind power plants just a stone's throw away from the factory.



ORREFORS KOSTA BODA

Orrefors Kosta Boda has been working actively with environmental questions since the 1970's. The glasswork in Kosta was among the first in the world to create crystal glass without lead and arsenic, which challenged a whole industry. Orrefors Kosta Boda's aim it to become the world's most sustainable company in glass production, where focus is on renewable energy, water in the production process, emissions, chemicals and glass waste from production.

In recent seasons, Orrefors Kosta Boda has developed several exciting collections. For example, together with Cervera - Sweden's largest chain of stores selling quality products for the kitchen, table and home – the collection "Recycle" has been developed. The collection is made of crushed colored waste glass from other productions. Each bowl is unique because the shade varies depending on how much pigment is in the recycled glass.

They have also done a collaboration with Ryd's Car Glass and the artist Erika Lagerbielke, where damaged glass from cars is used to produce unique, handmade art glass with its own artisanal character and style. Every year, thousands of tonnes of car glass are collected and usually become mineral wool or landfill, but there has previously been very little interest in recycling this glass in new and creative ways.



KOSTA BODA ART HOTEL

Kosta Boda Art Hotel is a business with many smart sustainability solutions. To name a few, they have water reduction in the taps, reuse 80 % of the pool water (the 20 % they have to refill is heated with the heat from what is drained), empty the garbage without replacing the plastic bags and a brand new accounting system that reduces the amount of paper and time. The restaurants put great emphasis on good food and locally produced ingredients. It is a given to use Swedish vegetables, buy bread from the bakery on the other side of the street and take care of food waste that can be given as food to the animals in the Kosta Safari Park.



NEW WAVE GROUP SWITZERLAND

New Wave Group in Switzerland is one of our largest office and warehouse in Europe. From here, many New Wave Group brands are distributed to big parts of Europe. In 2019, they invested in solar panels and LED bulbs while improving insulation – which will save a lot of energy onwards. The office has a sustainable mindset and works on reducing the quantities of printed catalogs, replacing the traditional polybag when packing products and try to choose train for long-distance transport whenever possible. They also plan to replace all their cars with electric cars or hybrids.

In 2019, they invested in solar panels and LED bulbs.

80% Clique has a large assortment of Oeko-Tex certified garments – over 80 % of the product range.



CLIQUE

Clique is one of New Wave Group's biggest brands and is mainly associated with a wide collection of classic basic garments and accessories – products that are always useful. Clique has a large assortment of Oeko-Tex certified garments – over 80 % of the product range.

During 2019, Clique has worked on developing a collection of organic cotton and where the polyester used comes from recycled post-consumer material. We will see the result in 2020 when the collection is launched.





03 - About the Group

New Wave Group is a growth company that designs, acquires and develops brands and products in the corporate, sports and leisure, gifts and home furnishings sectors.

New Wave Group was established in Sweden 1990 and has since gradually expanded in Europe, North America and Asia. New Wave Group's organization is decentralized, with a

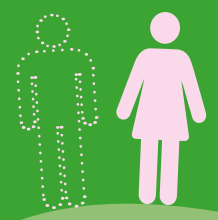
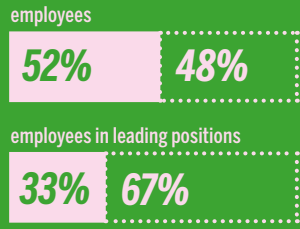
high degree of independence and self-determination being delegated to company management, but with the advantages of belonging to a larger group. The Group's values are its guiding principle and we are dedicated to upholding and spreading New Wave Group's values within the Group.

6,903.5
sek million net sales 2019

- **Own purchasing offices**
Shanghai (China), Dhaka (Bangladesh), Ho Chi Minh City (Vietnam), Bangalore (India)
- **Sales activities**
in own subsidiaries

2,579
employees

■ women
■ men



< 30 years: 19%
30-50 years: 54%
> 50 years: 27%

Vision and values

New Wave Group's organization is decentralized with a lot of entrepreneurial spirit. The Group's values are its guiding principle, no matter which subsidiary, operating segment or country. We are dedicated to upholding and spreading New Wave Group's values within the Group.



VISION

All operating segments and brands have their own visions and business concepts. Although they may differ in some parts, all subsidiaries are gathered under an overall vision of building world-leading brands and world-leading suppliers in each operating segment. Read more about the visions of each operating segment in the Annual Report.

016
"Sustainability and long-term thinking shall characterize the decisions we make, big and small."

001
Most things are still undone. No matter what has been achieved by us or others in the past, there is always more to be done. Pursue constant growth.

002
There are no limits. Neither national nor cultural, religious, performance or any other limits. If you feel you have reached one, try to find a way round.

003
Constant improvements. Everything can be improved - always!

004
If you make a mistake, learn from it. Everyone makes mistakes, but if we learn from them we can improve ourselves as well as the company.

005
Be happy! Your mood affects people around you and they deserve a smile.

006
See the opportunities and not the problems. Every problem is actually an opportunity in disguise, and that is what you should focus on.

007
Act now. Tomorrow may be too late.

008
A dollar saved is a dollar earned. To earn a dollar we must sell for ten dollars.

009
Hard work gives results.

010
Treat customers the way you want to be treated when buying something privately. Our brands are never better than our performance. New Wave Group is a service company.

011
Always be 100 percent loyal towards the company.

012
Use common sense and good judgement.

013
Always think: what is my contribution towards improving the company?

014
Always be honest. Never lie, neither to your colleagues nor superiors or customers, regardless of the objective.

015
Knowledge. We should always strive to have the highest competence and knowledge in the business we operate in.

016
We have committed ourselves to conduct the business responsibly. Sustainability and long-term thinking shall characterize the decisions we make, big and small. Do not take shortcuts that risk damaging people, the environment or the company. Perform your work with respect and care!

Organization and governance



The overall responsibility for strategies, goals and follow-ups lies with the Group Management and the CSR and Sustainability Manager. The operational responsibility is decentralized to the subsidiaries and their respective CEO's.

CODE OF CONDUCT, POLICIES AND GUIDELINES

New Wave Group shall conduct business in accordance with good business practice and high ethics in all relationships with different stakeholders. The foundation of the work is the values of New Wave Group and the Code of Conduct (read more about the Code of Conduct on page 15). We strive to work preventively as much as possible and apply the precautionary principle.

In addition to the Code of Conduct, New Wave Group has the following policies and guidelines: Anti-corruption policy with guidelines for bribery and corruption, CSR and environmental policy, Handbook for employees, Financial risk policy, Information policy, IT policy and Data Breach policy.

SUSTAINABILITY BOARD

New Wave Group established in 2015, an expert panel on social and environmental topics. The purpose of the board is to give feedback, critique and suggestions on our work with sustainability. It is a forum for dialogue and a great opportunity to get qualified advice from true experts within sustainability. Topics that have been discussed in the Sustainability Board are sustainable public procurement, young workers protection and strategic communication. In 2019, the Sustainability Board had an ongoing dialogue, but no physical meeting.

The Sustainability Board

Ulrica Messing

- **Chairman of the Board**
Astrid Lindgrens Värld
- **Chairman of the Board**
Wallenstam AB
- **Member of the Board**
Länsförsäkringar Fond
- **Chairman of the Board**
SOS Alarm
- **Chairman of the Board**
Port of Gothenburg (until March 2019)



Mikael Karlsson

- **Researcher** at
KTH Royal Institute
- **Lecturer** environmental science
Karlstad University
- **Senior Partner and Advisor**,
2050 Consulting
- **Member of the Board**
Swedish Forest Agency
- **Member of**
Kemikalieinspektionen's insynsråd
- **Member** of Kärnavfallsrådet



Anders Ferbe

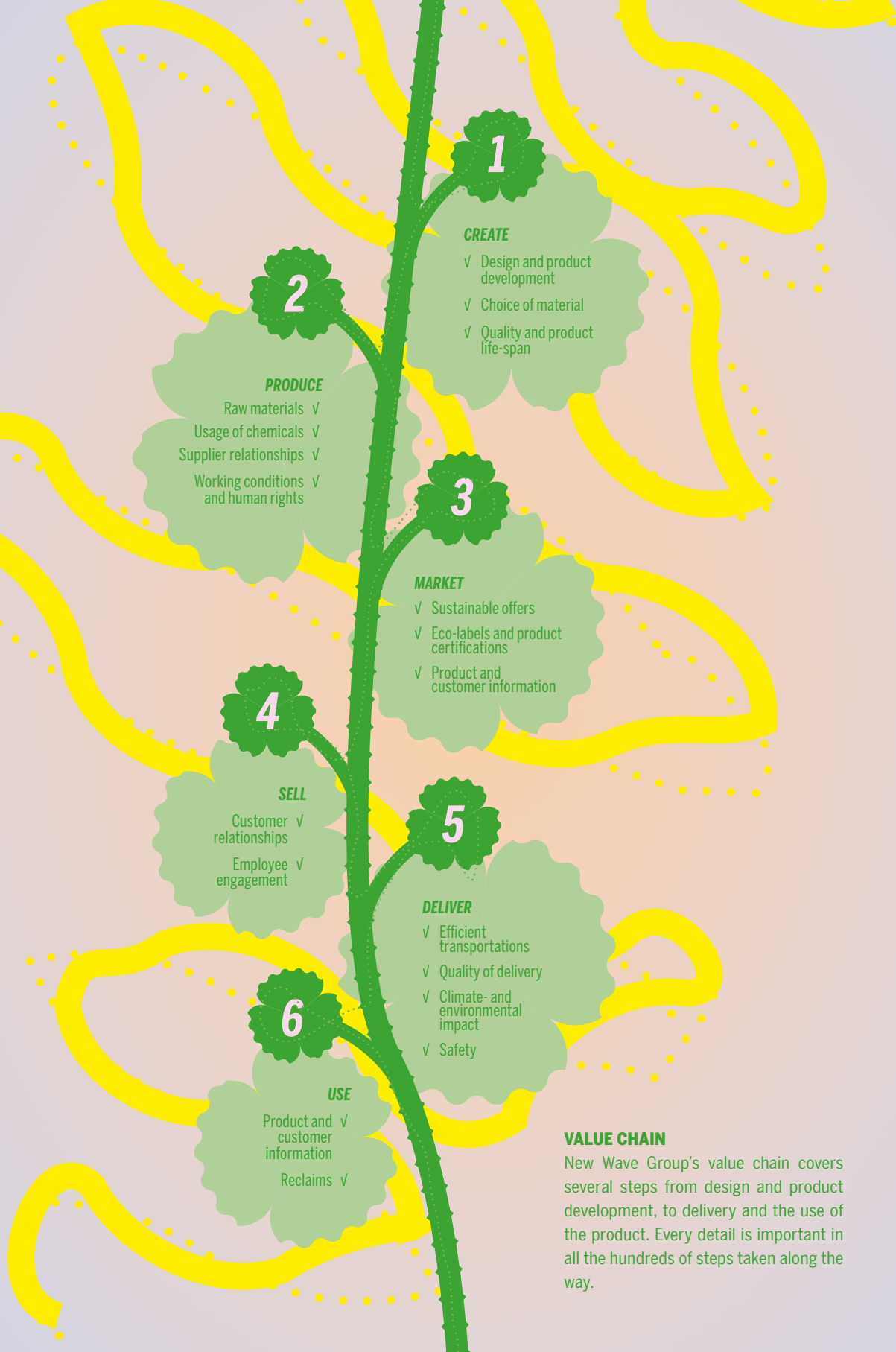
- **Senior Advisor**
- **President** for the Swedish State Delegation for Senior Labor
- **Investigator** collectively agreed unemployment insurance
- **Previous President** of the Trade Union IF Metal
- **Lay judge** at Södertörns Tingsrätt



Anni Sandgren

- **CSR and Sustainability Manager**
at New Wave Group





VALUE CHAIN
New Wave Group's value chain covers several steps from design and product development, to delivery and the use of the product. Every detail is important in all the hundreds of steps taken along the way.

IMPACT IN THE VALUE CHAIN

New Wave Group influences and manages different parts of the value chain to varying extent. Because of the nature of the operations, our efforts are mainly put on sourcing, production and suppliers in the global supply chain. However, some subsidiaries like Seger and Orrefors Kosta Boda have their own in-house production, where we also have direct influence and greater impact.

operating since 1992, we have three minor offices in Qingdao, Xiamen and Nanchang. Our procurement strategy is to purchase directly from our suppliers and to cut intermediaries that could jeopardize our control of the supply chain. Being represented on site enables us to have a close partnership with our suppliers and to actively monitor flow of goods and quality.

OWN PURCHASING OFFICES

New Wave Group is never far away from the production. We have our own purchasing offices in charge of sourcing and production. Our offices are located in China, India, Vietnam and Bangladesh, consisting of approximately 200 employees.

China is our biggest country of production. In addition to our main office in Shanghai, where we have been



Great impact	<p>Subsidiaries</p> <ul style="list-style-type: none"> - Assortment strategy - Product development - Internal education - Employee development - Information and lobbying - Regular self-monitoring 	<p>In-house production</p> <ul style="list-style-type: none"> - Regular self-monitoring - Waste disposal - Choice of energy sources 	<p>Own warehouses and transportation</p> <ul style="list-style-type: none"> - Choice of facilities - Waste disposal - Choice of energy sources - Choice of routes - Choice of transportation means and fuel 	
	<p>Suppliers</p> <ul style="list-style-type: none"> - Choice of suppliers - Agreements and terms - Choice of products - Product quality audits - Social and environmental audits 	<p>Transportation providers</p> <ul style="list-style-type: none"> - Choice of transportation providers - Requirements on routes, transportation means and fuel - Regular checks and follow-ups 		
Limited impact	<p>Subcontractors</p> <ul style="list-style-type: none"> - Agreements and terms with suppliers - Choice of materials 	<p>Customers</p> <ul style="list-style-type: none"> - Communication and marketing - Product offers - Loyalty programs - Dialogue and cooperation with interest groups 		

04 - About the report

This is the New Wave Group Sustainability Report that summarizes the work with sustainability within the Group during the fiscal year 2019.

HIGH VERY HIGH

Materiality analysis

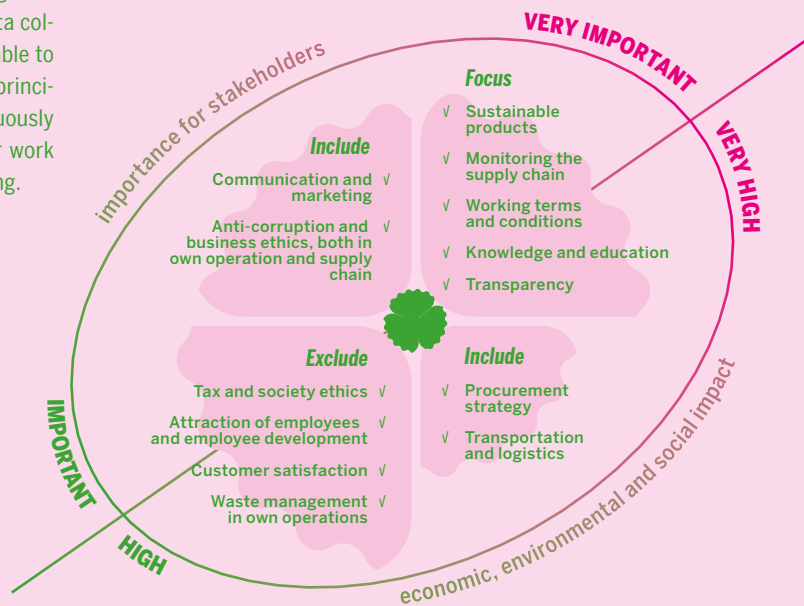
The content in the report reflects the questions that are most important for New Wave Group on Group level and has been prioritized high by our stakeholders.

The report has been developed by the Sustainability Department of New Wave Group. The Board of Directors and the Group Management have been involved in the process. Data collection and compilation has been made on Group level while the CEO of each subsidiary has been responsible for reporting.

Reported data and key figures are based on 2019 activities, unless otherwise stated. As in previous year, we have chosen to report with support from GRI Standards, Global Reporting Initiative's latest guidelines. Still a lot of work and data collection remain in order to be able to fully report according to GRI's principles. The ambition is to continuously improve and develop both our work with sustainability and reporting.

The expectations of the stakeholders in combination with the knowledge of our employees are guidelines for how we work with sustainability. By being responsive to the expectations, we can continue to develop in the desired direction. The materiality analysis includes, among other things, the result of surveys filled in by three of our key stakeholders: shareholders, customers and employees.

We have also taken into consideration the sustainability questions most important for New Wave Group in terms of business strategy and competitiveness. A key question for our stakeholders is New Wave Group's efforts to create sustainable products where quality, design and compliance with regulations, as well as good environmental performance and social conditions throughout the supply chain are taken into account.



STAKEHOLDERS AND IMPORTANT QUESTIONS

The most important stakeholders for New Wave Group are the ones that are most affected and/or affect our business to a large extent. We strive for a continuous dialogue to ensure good relationships and understand their expectations.



Stakeholder groups	Stakeholders	Channels for communication	Important questions
Shareholders Decides on the aims of the business and influence the company's direction.	Funds and financial institutions ✓ Private shareholders ✓	Annual General Meeting ✓ Individual meetings ✓ Stock analysis ✓ Surveys ✓	Tax and social ethics ✓ Product quality ✓ Attraction of employees and employee development ✓ Communication and marketing ✓
Customers Affects New Wave Group's revenue and brand perception	Promo distributors ✓ Retail ✓ End consumers ✓	Customer surveys ✓ Market Advisory Board ✓ Individual meetings ✓ Social media ✓	Product quality ✓ Strong brand in light of sustainability ✓ Origin and transparency ✓ Monitoring of the supply chain ✓ Provide information to support purchases of sustainable products ✓ Knowledgeable staff ✓
Employees Implement and develop operational work within New Wave Group	All employees in all subsidiaries ✓ Consultants and clients ✓	Daily interaction ✓ Staff meetings and performance reviews ✓ Employee surveys ✓	Customer satisfaction and product quality ✓ Performance reviews and feedback ✓ Working terms and conditions ✓ Equality ✓ Knowledge and education ✓ Monitoring of the supply chain ✓ Anti-corruption and business ethics ✓
Suppliers Produce and influence the impression of New Wave Group's products	External suppliers, for the majority in Asia ✓	Purchasing offices ✓ Individual meetings ✓ Supplier audits (internal and third-party) ✓	Long-term business relationships ✓ Anti-corruption and bribes ✓ Working conditions, terms health and safety ✓ Chemicals ✓
Society Sets the outside expectations on New Wave Group	Interest groups and organizations ✓ Partners ✓ Politicians ✓ Policy makers ✓	Lectures at seminars and other events ✓ Memberships in industry organisations ✓ Individual meetings ✓	Product quality ✓ Chemicals ✓ Anti-corruption and bribes ✓ Democracy ✓ Origin and transparency ✓ Monitoring of the supply chain ✓ Eco-labels and certifications ✓

GRI index

General Disclosure

Disco-
sure

Disclosure/title

Comment

Page

Organization profile

GRI 102: Standard Disclosures 2016	102-1	Name of the organization	New Wave Group AB.	
	102-2	Activities, brands, products, and services		SR p.6, 14-15, AR p.28-29
	102-3	Location of headquarters	Gothenburg.	
	102-4	Location of operations		AR p.14-15
	102-5	Ownership and legal form		AR p.38
	102-6	Markets served		SR p.28-29, AR p.14-15
	102-7	Scale of the organization		SR p.14-15
	102-8	Information on employees and other workers		SR p.28, AR p.80
	102-9	Supply chain		SR p.32
	102-10	Significant changes to the organization and its supply chain	Management Report.	AR p.57-63
	102-11	Precautionary Principle or approach	We apply the precautionary principle in our environmental work and have adopted a preventative approach with the substitution of hazardous chemicals.	
	102-12	External initiatives	Amfori BSCI, Fair Labour Association, C-TPAT.	
	102-13	Membership of associations	Amfori BSCI, Bangladesh Accord on Fire and Building Safety, RISE, The Swedish Chemicals Group by RISE IVF, Clean Shipping Index, Textile Exchange, CCR CSR, The Board for sustainable Product Media.	SR p.21
Strategy				
	102-14	Statement from senior decision-maker		SR p.4
	102-15	Key impacts, risks, and opportunities		SR p.6-9, AR p.92-98
Ethics and integrity				
	102-16	Values, principles, standards, and norms of behavior	Amfori BSCI Code of Conduct, Handbook for employees.	SR p. 15, 29
	102-17	Mechanisms for advice and concerns about ethics	Sustainability Board.	SR p.30
Governance				
	102-18	Governance structure		SR p.30, AR p.39-45
	102-22	Composition of the highest governance body and its committees		AR p.52-53
	102-23	Chair of the highest governance body		AR p.52
	102-24	Nominating and selecting the highest governance body		AR p.40
	102-32	Highest governance body's role in sustainability reporting	Reviewed by all the relevant members of the executive management team and CEO.	

Stakeholders and stakeholder engagement

GRI 102: Standard Disclosures 2016	102-40	List of stakeholder groups		SR p.35
	102-41	Collective bargaining agreements	All employees in Sweden are covered by collective agreements. Other countries follow the guidelines of collective agreements.	
	102-42	Identifying and selecting stakeholders		SR p.34
	102-43	Approach to stakeholder engagement		SR p.135
	102-44	Key topics and concerns raised		SR p.35
Reporting				
	102-45	Entities included in the consolidated financial statements		AR p.115
	102-46	Defining report content and topic Boundaries		SR p.34
	102-47	List of material topics		SR p.34
	102-48	Restatements of information	Any restatements of information are always described in connection with the reported key figures.	
	102-49	Changes in reporting	Any changes in reporting are always described in connection with reported methods.	
	102-50	Reporting period	Refers to fiscal year 2019.	
	102-51	Date of most recent report	5 April 2019.	
	102-52	Reporting cycle	Yearly.	
	102-53	Contact point for questions regarding the report	Anni Sandgren, CSR and Sustainability Manager, anni.sandgren@nwg.se.	
	102-54	Claims of reporting in accordance with the GRI Standard	GRI standards level core.	
	102-55	GRI content index	Consists of this index.	
	102-56	External assurance	The report has been reviewed by an external auditor, who confirms that the report complies with applicable legal requirements for sustainability reporting.	SR p.42

Economy	Disclosure	Disclosure/title	Comment	Page
GRI 102: Standard Disclosures 2016	103-1/2	Management Approach, 201		AR p.16-35
	201-1	Direct economic value generated and distributed		AR p.58-59
GRI 205: Anti-corruption 2016	103-1/2	Management Approach, 205	Risk for corruption can be found in our sourcing processes and in the meetings with our customers. Fundamental for the preventive work is the values of New Wave Group, the Code of Conduct and additional Group policys. During audits of suppliers there is a risk of corruption, which is a serios zero tolerance issue.	SR p.14-17
	205-1	Operations assessed for risks related to corruption	See 103-1/2.	
	205-2	Communication and training about anti-corruption policies and proceduresn	Communication of Code of Conduct is made to all suppliers with related agreements.	
	205-3	Confirmed incidents of corruption and actions taken	No reported incidents during the year.	
Environment	Disclosure	Disclosure/title	Comment	Page
GRI 301: Materials 2016	103-1/2	Management Approach, 301	Decisions regarding materials are decentralized to the subsidiaries. New Wave Group aim to introduce more sustainable and eco-friendly materials in our range of products.	
	Own indicator	Products with sustainable attribute		SR p.10
GRI 302: Energy 2016	103-1/2	Management Approach, 302	The direct energy consumption occurs mainly in own production, where we have direct influence, and real estate energy. Other significant parts of energy consumption are upstream in our suppliers' factories and also downstream, for example, by washing garments. Therefore, we work to reduce our own consumption, focus on manufacturers' environmental work through audits, and advise customers on care instructions for garments.	
GRI 305: Emissions 2016	302-1	Energy consumption within the organization	Energy consumption in own production.	SR p.39
	103-1/2	Management Approach, 305	Significant climate impact comes from freight transportation between Asia and Europe and Asia and North America. Therefore, we are actively working to create effective routines and to influence the transportation providers we cooperate with.	SR p. 12, 22-23
	305-1	Direct (Scope 1) GHG emission	Company cars.	SR p.39
	305-3	Other indirect (Scope 3) GHG emissions	Indirect from carriers.	SR p.12
	305-5	Reduction of GHG emissions	Zero vision to minimize air freight, create efficient routines and influence the carriers we are cooperating with to use cleaner vessels.	SR p. 22-23
GRI 308: Supplier Environmental Assessment 2016	103-1/2	Management Approach, 308	New Wave Group works with other actors in the industry to gain an understanding of the environmental impact in the supplier chain, and how we through requirements and development projects can contribute to improvements.	
	308-2	Negative environmental impacts in the supply chain and actions taken.	An assessment of new suppliers, as well as ongoing assessments of existing ones, are conducted. To some extent, environmental requirements are included in the amfori BSCI audits, but are also included in our internal audits.	

DETAILED ENERGY AUDITS

During 2019, we have mapped the Group's energy use in own production as well as for properties (offices and warehouses). The majority of the properties are rented, why the potential for improvement in energy use is considered small. Therefore, we have chosen not to include this in the report. Own production is reported to the right.

	2019
Own production (MWh)*	16 791.5

*Includes Dahetra, Glasma, Orrefors Kosta Boda, Seger, Termo Original, Toppoint (GS Plastics and Toppoint Polska)

COMPANY CARS

With a large number of travelling salesmen, company cars are a natural part of New Wave Group's business. Like many other business decisions, the choice of company cars is decentralized to the subsidiaries. Several of the companies have car policies including the aim of using more environmental friendly alternatives.

	2019
Company cars	395

	Diesel fuel	Gasoline fuel	Hybrid
Number	363	26	6
Kilometers	11 024 290	822 230	238 600
Litres*	496 093	49 334	-
Emissions CO2 (t)**	1 356	140	-

* The calculations are made with the following standard values on mileage and fuel type: 0.45 litres/10 kilometers for diesel and 0.6 litres/10 kilometers for gasoline.

** The calculations are based on the average emission data for the fuel sold in Sweden during 2019/2018, which is the latest available.

Social	Disclosure	Disclosure/title	Comment	Page
GRI 403: Occupational Health and Safety 2016	103-1/2	Management Approach, 403	New Wave Group AB and all subsidiaries have a legal responsibility and direct impact on the employees working environment. Depending on the activity (office, warehouse, production etc.), specific risk assessments and action plans are made. (For the work with health and safety at suppliers, see GRI 414).	
GRI 404: Training and Education 2016	103-1/2	Management Approach, 404	The responsibility for regular evaluation, career development and education lies on the respective company within the Group.	
	404-1	Average hours of training per year per employee	Based on the estimations from the companies, the average number of training hours (internally and externally) per year and employee is 12 hours.	
GRI 405: Diversity and Equal Opportunity 2016	103-1/2	Management Approach, 405	Diversity, gender equality and anti-discrimination are a fundamental principles of the Code of Conduct.	
	405-1	Diversity of governance bodies and employees	Currently, only by gender.	SR p.28, AR p.80
GRI 407: Freedom of Association and Collective Bargaining 2016	103-1/2	Management Approach, 407, 408, 409	Freedom of association and collective bargaining, no child labor and no forced labor are fundamental principles in the Code of Conduct. The Code of Conduct is followed up through third-party audits, internal audits and factory visits.	SR p.14-17
	407-1	Operations and suppliers in which the right to freedom of association and collective bargaining may be at risk	An increased risk of limited association freedom of association and collective bargaining lays in the product supply chain, in particular factories and subcontractors in risk countries.	
GRI 408: Child Labor 2016	408-1	Operations and suppliers at significant risk for incidents of child labor	An increased risk for incidents of child labour lays further down in the supply chain, where the control is limited. In order to gain more knowledge, education and advice on how children and young people are affected in the global supply chain, New Wave Group is a part of CCR CSR's (Save the Children's Sustainability Center in China) Virtual Youth Development Working Group.	
GRI 409: Forced or Compulsory Labor 2016	409-1	Operations and suppliers at significant risk for incidents of forced or compulsory labor	An increased risk of forced or compulsory labor lays in the product supply chain, in particular factories and subcontractors in risk countries.	
GRI 414: Supplier Social Assessment 2016	103-1/2	Management Approach, 414	The assessment of social aspects of supplies is a challenge, not just for us but for the entire industry. All suppliers acknowledge the Code of Conduct as part of the Business Agreement and an assessment of social aspects must be done before the first purchase order. The assessment is done either through self-assessment, an internal audit or a third-party audit (amfori BSCI or equivalent). Our goal is to include all our suppliers located in risk countries in amfori BSCI or an equal monitoring system.	SR p.14-17
	414-1	New suppliers that were screened using social criteria		SR p.17
	414-2	Negative social impacts in the supply chain and actions taken		SR p.17
	Own indicator	Percentage of Bangladesh suppliers who conducted fire and safety inspections under the Accord on Fire and Building Safety in Bangladesh	100% of New Wave Group's suppliers in Bangladesh have conducted fire and safety inspections under the Accord on Fire and Building Safety in Bangladesh.	
GRI 416: Customer Health and Safety 2016	416-1	Assessment of the health and safety impacts of product and service categories	100% of New Wave Group's products are assessed for health and safety improvements, for example in the case of chemicals.	
	Own indicator	Voluntary requirements	New Wave Groups Restricted Substance List is on many points more extensive than legal requirements.	
GRI 417: Marketing and Labeling 2016	417-1	Requirements for product and service information and labeling	New Wave Group base requirements on current legislation and industry standards/agreements regarding information and labeling.	
	417-2	Incidents of non-compliance concerning product and service information and labeling	No incidents reported during the year.	

Apparel and footwear sector supplement	Disclosure	Disclosure/title	Comment	Page
	AF1	Code of conduct content and coverage	Attached poster.	SR p.15
	AF2	Parties and personnel engaged in Code of Conduct compliance function	Own personnel and accredited auditors.	SR p.14-17
	AF3	Compliance audit process		SR p.17
	AF4	Grievance mechanisms	Fundamental principle in our Code of Conduct.	
	AF5	Capacity building	Trainings initiated by New Wave Group as well as training within the context of amfori BSCI and the Accord on Fire and Building Safety in Bangladesh.	
	AF6	Polycs for supplier selection, management and termination	Termination of cooperation with a supplier may occur if a zero tolerance issue reveals (child labor, serious health and safety risks, substitution of subcontractor without prior approval and refusal to be audited) are detected, but if we identify non-compliances, we prefer to develop an action plan in order to bring the supplier back to an acceptable standard, rather than to end our cooperation.	
	AF7	Number and location of workplaces covered by the code of conduct	All companies and all suppliers within the Group.	
	AF8	Number of audits conducted and percentage of workplaces audited	Share of factories audited.	SR p.11
	AF9	Incidents of non-compliance with legal requirements or collective bargaining agreements on wages	Non-compliances regarding wages may occur, especially in risk countries, but are not considered as a zero tolerance issue that pose an immediate threat to the health and safety of the workers (see also AF6).	SR p.17
	AF10	Incidents of non-compliance with overtime standards	Non-compliances regarding overtime standards may occur, especially in risk countries, but are not considered as a zero tolerance issue that pose an immediate threat to the health and safety of the workers (see also AF6).	SR p.17
	AF11	Incidents of non-compliance with standards on pregnancy and maternity rights	No incidents reported during the year.	
	AF12	Incidents of the use of child labor	No incidents reported during the year.	
	AF13	Incidents of non-compliance with standards on gender discrimination	No incidents reported during the year.	
	AF14	Incidents of non-compliance with Code of Conduct.	Common non-compliances are excessive overtime (mainly China) work or lack of documentation. No zero-tolerance incidents have been reported during the year.	

THIS SUSTAINABILITY REPORT IS SUBMITTED BY THE BOARD OF DIRECTORS

THE AUDITOR'S REPORT ON THE SUSTAINABILITY REPORT

To the General Meeting of New Wave Group AB (publ), corporate identity number 556350 - 0916.

ENGAGEMENT AND RESPONSIBILITY

The Board of Directors is responsible for that the statutory sustainability report has been prepared in accordance with the Annual Accounts Act.

THE SCOPE OF THE AUDIT

Our examination of the statutory sustainability report has been conducted in accordance with FAR's auditing standard RevR 12 The auditor's report on the statutory sustainability report. This means that our examination of the statutory sustainability report is different and substantially less in scope than an audit conducted in accordance with International Standards on Auditing and generally accepted auditing standards in Sweden. We believe that the examination has provided us with sufficient basis for our opinions.

OPINION

A sustainability report has been prepared.

Gothenburg, April 2, 2020
Ernst & Young AB



Nina Bergman
Authorized Public Accountant



Chairman of the Board

Olof Persson

Members of the Board

Torsten Jansson
M. Johan Widerberg
Christina Bellander
Mats Årjes
Jonas Eriksson
Magdalena Forsberg

~~~~~  
The Sustainability Report has been approved by the Board of Directors on April 2, 2020.



Follow our  
sustainability  
journey on  
[NWG.SE/EN](https://www.nwg.se/en)

### CONTACT

If you have any questions or comments on the report, contact us:

**Anni Sandgren**  
CSR and Sustainability Manager  
[anni.sandgren@nwg.se](mailto:anni.sandgren@nwg.se)

**New Wave Group AB**  
Kungssportsavenyen 10  
411 36, Gothenburg  
+ 46 (0) 31 712 89 00

*NewWave*  
GROUP

